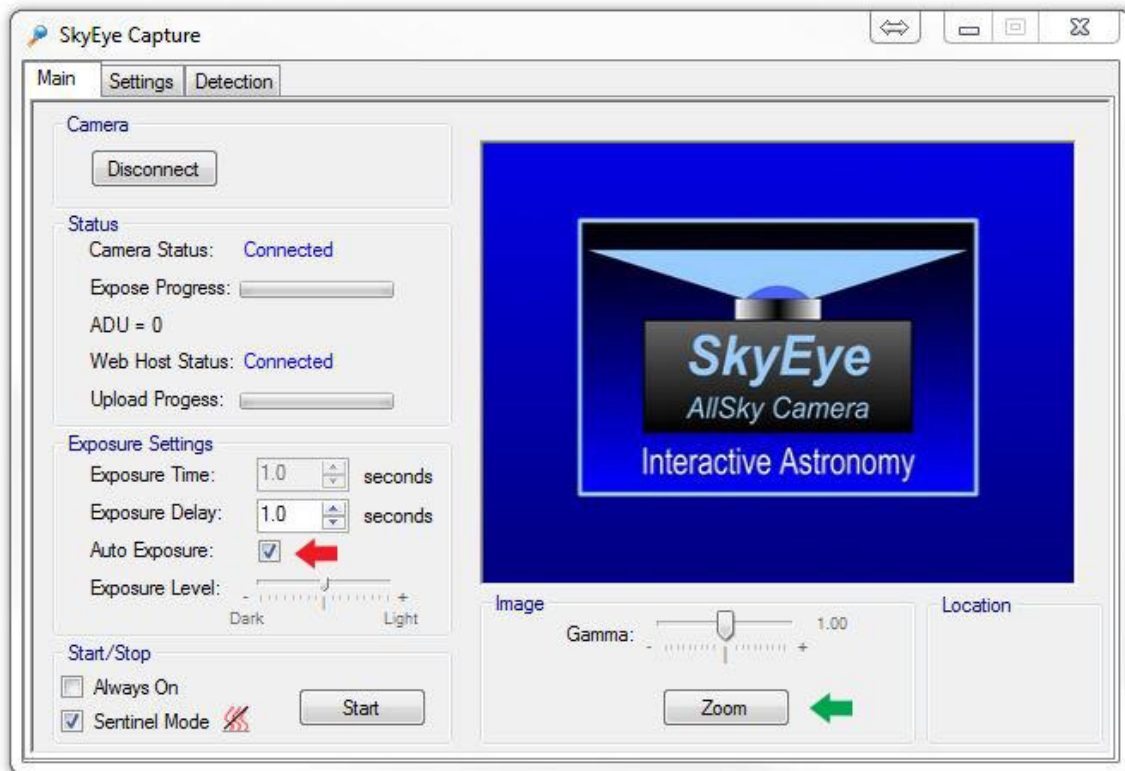


SkyEye Capture instruction manual addendum for version 178 release

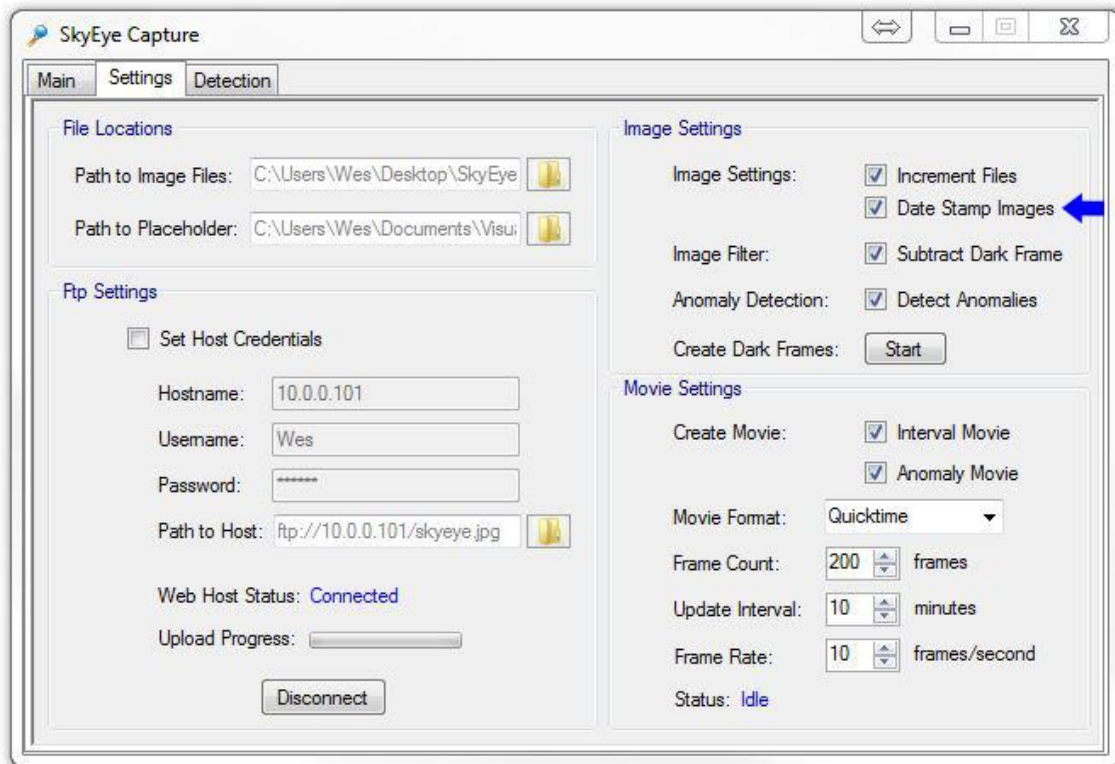
A new "Auto Exposure" feature has been added. When the "Auto Exposure" checkbox is ticked, the system will automatically adjust the camera shutter time according to the sky brightness. This can be useful during Moonlit and cloudy nights. The exposure time will vary automatically from one second up to a maximum of sixty seconds. The algorithm can be fine tuned by the user by using the "Exposure Level" slider although in most cases the default setting should work fine.

The "Zoom" feature has been improved with a child window that maintains the native aspect ratio of the camera when resized.



An optional Time/Data stamp can be added to each captured image by ticking the "Date Stamp Images" check box.

Each image is stamped with the starting time and date of the image acquisition along with the frame sequence number, exposure time, gamma setting and average ADU brightness value of the image. This can be useful when submitting images for meteor reports, etc.



ver. 178 01/25/2014